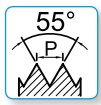
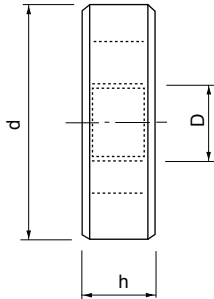


FILIERE TONDE - ROUND DIES

FILIERE TONDE con IMBOCCO CORRETTO
Filettatura ISO 228/1 - GAS cilindrica BSP

ROUND DIES with GUN NOSE
ISO 228/1 - Whitworth pipe thread BSP



DIN-EN 24231					4645	4645.1	4645.E
D	filetti x 1" TPI	d	h	Ø mm	HSS	Filettatura SINISTRA LEFT Hand	HSSE
1/8	28	30	11	9,728		*	
1/4	19	38	10	13,157		*	
3/8	19	45	14	16,662		*	
1/2	14	45	14	20,955		*	
5/8	14	55	16	22,911		*	-
3/4	14	55	16	26,441		*	
7/8	14	65	18	30,201		*	-
1"	11	65	18	33,249		*	
1"1/4	11	75	20	41,910		*	-
1"1/2	11	90	22	47,803		*	-
1"3/4	11	105	22	53,746		*	-
2"	11	105	22	59,614		*	-
2"1/4	11	120	22	65,710	*	-	-
2"1/2	11	120	22	75,184	*	-	-
3"	11	140	25	87,884	*	-	-

* Prezzo e disponibilita a richiesta / Price and delivery time on request