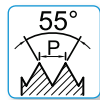
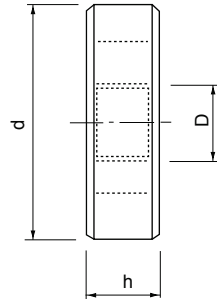


FILIERE TONDE - ROUND DIES

FILIERE TONDE con IMBOCCO CORRETTO
Filettatura **Whitworth BSW** - norma BS 84

ROUND DIES with GUN NOSE

British Standard Whitworth Thread BSW - BS 84 norm



		DIN-EN 22568			4635	4635.1
D	filetti x 1" TPI	d	h	Ø mm	HSS	Filettatura SINISTRA LEFT Hand
1/8	40	20	5	3,175		*
5/32	32	20	5	3,969		*
3/16	24	20	7	4,762		*
1/4	20	20	9	6,350		*
5/16	18	25	9	7,938		*
3/8	16	30	11	9,525		*
7/16	14	30	11	11,113		*
1/2	12	38	14	12,700		*
9/16	12	38	14	14,287		*
5/8	11	45	18	15,876		*
3/4	10	45	18	19,050		*
7/8	9	55	22	22,225		*
1"	8	55	22	25,400		*
1"1/8	7	65	25	28,575	*	-
1"1/4	7	65	25	31,750	*	-
1"3/8	6	65	25	34,925	*	-
1"1/2	6	75	30	38,100	*	-

* Prezzo e disponibilità a richiesta / Price and delivery time on request