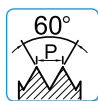
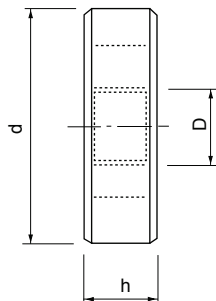


## FILIERE TONDE - ROUND DIES

FILIERE TONDE con IMBOCCO CORRETTO  
Filettatura **UNF** a passo fine ASME B1.1 - 2A

ROUND DIES with GUN NOSE  
**UNF** Fine Thread ASME B1.1 - 2A



| DIN-EN 22568 |                     |    |    |        | 4675 | 4675.1                            |
|--------------|---------------------|----|----|--------|------|-----------------------------------|
| D            | filetti x 1"<br>TPI | d  | h  | Ø mm   | HSS  | Filettatura SINISTRA<br>LEFT Hand |
| n. 4         | 48                  | 20 | 5  | 2,845  |      | *                                 |
| n. 5         | 44                  | 20 | 5  | 3,175  |      | *                                 |
| n. 6         | 40                  | 20 | 5  | 3,505  |      | *                                 |
| n. 8         | 36                  | 20 | 7  | 4,166  |      | *                                 |
| n. 10        | 32                  | 20 | 7  | 4,826  |      | *                                 |
| n.12         | 28                  | 20 | 7  | 5,486  |      | *                                 |
| 1/4          | 28                  | 25 | 9  | 6,350  |      | *                                 |
| 5/16         | 24                  | 25 | 9  | 7,938  |      | *                                 |
| 3/8          | 24                  | 30 | 11 | 9,525  |      | *                                 |
| 7/16         | 20                  | 30 | 11 | 11,113 |      | *                                 |
| 1/2          | 20                  | 38 | 10 | 12,700 |      | *                                 |
| 9/16         | 18                  | 38 | 10 | 14,287 |      | *                                 |
| 5/8          | 18                  | 45 | 14 | 15,876 |      | *                                 |
| 3/4          | 16                  | 45 | 14 | 19,050 |      | *                                 |
| 7/8          | 14                  | 55 | 16 | 22,225 |      | *                                 |
| 1"           | 12                  | 55 | 16 | 25,400 |      | *                                 |
| 1"1/8        | 12                  | 65 | 18 | 28,575 |      | -                                 |
| 1"1/4        | 12                  | 65 | 18 | 31,750 |      | -                                 |
| 1"3/8        | 12                  | 65 | 18 | 34,925 |      | -                                 |
| 1"1/2        | 12                  | 75 | 20 | 38,100 |      | -                                 |

\* Prezzo e disponibilità a richiesta / Price and delivery time on request