

M

MASCHI A MACCHINA - MACHINE TAPS

MASCHI A MACCHINA **HSS-Co-PM**

SCANALATURE ELICOIDALI - ELICA DESTRA 10° - Imbocco "C"

Filettatura metrica ISO/DIN 13 - UNI 4535 a passo grosso

Rivestimento TiCN per NICKEL e leghe

MACHINE TAPS **HSS-Co-PM**

SPIRAL FLUTES - RIGHT HELIX 10° - Chamfer form "C"

ISO Metric Coarse Thread - UNI 4535 - DIN 13

TiCN coated for NICKEL and alloys



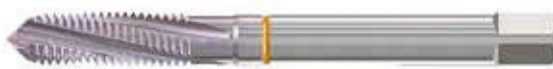
HSS-Co-PM

6HX



4512.XN1

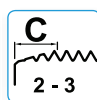
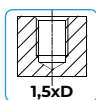
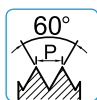
4H



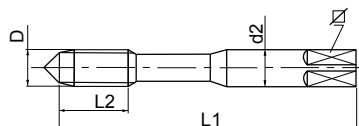
4512.XJN1



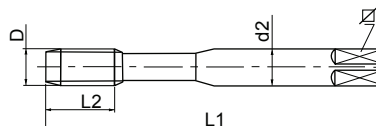
CRESTE ARROTONDATE
WITH ROUNDED CREST



NORMA DI FABBRICA - FIUM NORM



NORMA DI FABBRICA - FIUM NORM



NORMA DI FABBRICA							4512.XN1	4512.XJN1
D	p	L ₁	L ₂	d ₂	∇	∇		MJ - 4H
4	0,7	63	13	4,5	3,4	3,30		
5	0,8	70	15	6,0	4,9	4,20		
6	1	80	18	6,0	4,9	5,00		
8	1,25	90	25	8,0	6,2	6,80		
10	1,5	100	30	10,0	8,0	8,50		
12	1,75	110	30	12,0	9,0	10,30		

Materiali / Application: 4512.XN1: A6 / R4 / N2 - N3 / S1 - S3